

# UNSEEN STEWART ISLAND

EXPERIENCE THE PRISTINE WILDERNESS  
AND WILDLIFE OF STEWART ISLAND

EXPEDITION DOSSIER  
October 2022



Heritage Expeditions

— New Zealand —

ASK ABOUT! Pre Cruise Land Package With New Zealand Traveller (See page 5)



© C.Todd



© H.Dohn



© S.Bradley

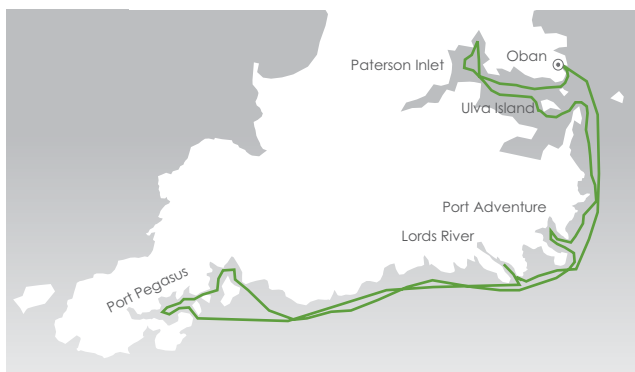
Discover the time-forgotten rawness of wildlife-rich Stewart Island/Rakiura and Ulva Island/Te Wharawhara with Heritage Expeditions, New Zealand's pioneering small ship expedition cruise company, on this exclusive 8-day voyage aboard our luxurious 18-guest expedition yacht *Heritage Explorer*.

Described by botanist Leonard Cockayne in 1909 as being "an actual piece of the primeval world", his comment still rings true today. Just 30 kilometres from the Mainland and with more than 85% of the island dedicated National Park, New Zealand's third island combines stunning landscapes spanning towering granite cliffs to unspoiled native forests, 700-kilometres of coastline, beaches, hidden bays and coves, with abundant wildlife, numerous conservation success stories, rich history, epic sunrises and sunsets and the rightly famous hospitality of the friendly locals.

And with its Maori name, Rakiura, translating to 'glowing skies', there's also the opportunity to experience the spectacular Aurora Australis which often puts on a mesmerising show as it paints the southern skies.

With only 25 kilometres of road, Stewart Island and its remote, hard to reach shores and historic spots are best explored by sea including nearby predator-free Ulva Island – your best chance of seeing New Zealand's national icon the Kiwi bird during the day along with Stewart Island Robin, Stewart Island Weka, South Island Kaka, Kereru (wood pigeon), Mohua (yellowhead), Red-crowned Parakeet, Fantail, Bellbird and Tui.

Discover quirky town centre Oban in Halfmoon Bay where a drink with a view can be enjoyed at the iconic South Sea Hotel, historic Paterson Inlet, Port Pegasus and more as we experience Unseen Stewart and Ulva Islands on this unforgettable adventure.



## ITINERARY

### Day 1: Invercargill/Oban

Make your way to the Invercargill airport where you will meet your fellow travellers before catching your charter flight (times will be confirmed with your voyage documents) to Oban. The Captain and Expedition Leader will be waiting to welcome you aboard *Heritage Explorer* at Oban and show you to your cabin as you settle into life aboard your home away from home.

### Day 2: Paterson Inlet

Awake refreshed this morning after your first night on board and enjoy breakfast among the wide open spaces and serenity of Stewart Island's primeval landscape. Today we plan to explore Paterson Inlet, its near 100-kilometre square expanse features bush-clad bays, beaches and inlets, is studded with around 20 islands and its waters frequently visited by Bottlenose Dolphins.

During our time here there will be opportunities to visit the historic Norwegian whaling station in Prices Inlet and Kaipipi Bay, where from 1923 and 1933 the Ross Sea Whaling Company of Sandefjord, Norway ran a repair base where chaser boats were serviced in preparation for the Antarctic summer, walk one

# UNSEEN STEWART ISLAND

---



of the many forest trails and explore predator-free bird sanctuary Ulva Island with our knowledgeable guides and marvel at the variety of birdlife which flourishes here.

## Day 3: Port Adventure

Exploring southwards along the eastern coast of Stewart Island there are several well protected and important harbours for us to visit, with Port Adventure being the first of these we reach. Popular for fishing, hunting and diving this bay once housed a small Maori settlement who arrived from The Neck in 1843. Here opportunities could include visiting the Port Adventure Hunters Hut in the Northern Arm, Zodiac cruising the coastline and the spectacular Heron River, along with adventures ashore on foot.

## Days 4 – 6: Port Pegasus

Sure to be one of the highlights of our voyage, we have three days to explore the remote, undisturbed beauty of Port Pegasus. Isolated at the southern end of the island, with access predominantly by sea, there is much to explore and experience among this undisturbed wilderness over the following three days. Boasting an expansive harbour laced with waterways, arms and channels, several waterfalls and three main islands – Pearl Island (the largest) in the north, Anchorage Island in the centre, and Noble Island in the south – provides an unrivalled opportunity to immerse yourself in the scenic beauty of Stewart Island.

We will spend our time exploring Zodiac and kayak, venturing into hidden coves and landing on pristine white sand beaches where few have set foot before. There are also a number of excellent walking options including exploring the Granite Domes to the west of Gog and Magog, or venturing onto

the southern extension of the subalpine Tin Range, the eastern area of which would become the last refuge for Kākāpo in the second half of the twentieth century. The marine life here abounds with Hooker's/ New Zealand Sea Lions and Yellow-eyed Penguins regularly seen. For those who enjoy fishing there will be ample opportunity to try your luck at catching a meal for the table.

## Day 7: Lords River

Returning northwards along the shores of Stewart Island's east coast, *Heritage Explorer* ventures into the sheltered waters of Lords River, the longest navigable river on Stewart Island at 8 kilometres. Considered one of the most spectacular and unspoilt areas of New Zealand and the country's Amazon, a historic deed was signed in 1999 to protect the area's 3,515 hectares of virgin native forest. Here we will take the opportunity to enjoy a Zodiac safari up this fascinating winding estuary with its tannin-stained water reminiscent of Fiordland as it snakes its way to the ocean from the interior of Stewart Island.

## Day 8: Oban/Invercargill

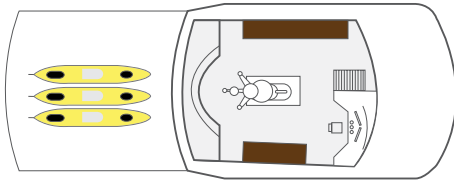
This morning *Heritage Explorer* returns to Oban where, after a final breakfast and farewells, you will be transferred to the airport to catch your charter flight to Invercargill. In case of unexpected delays, we ask you not to book any onward travel from Invercargill until after midday.

**Note: During our voyage, circumstances may make it necessary or desirable to deviate from the proposed itinerary. This can include weather and opportunities for making unplanned excursions. Your Expedition Leader will keep you fully informed.**

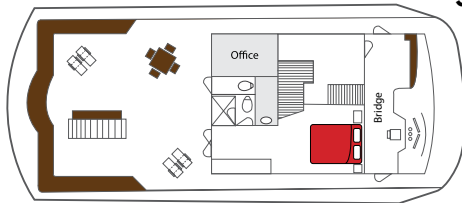
# UNSEEN STEWART ISLAND



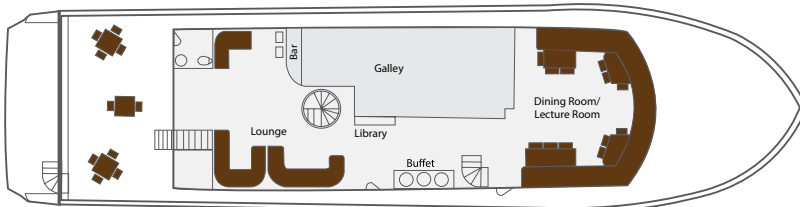
© A. Russ



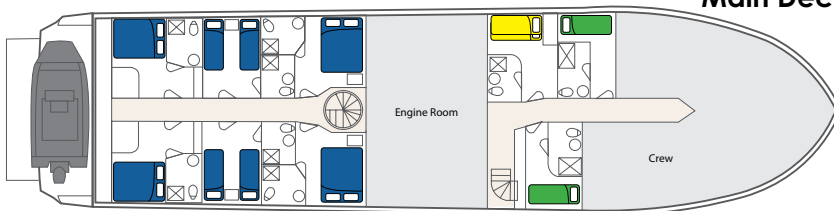
Sun Deck



Bridge Deck



Main Deck



Lower Deck

- Royal
- Salvin's

- Wandering
- Buller's

## DATES

**HX221018** 18 – 25 October 2022  
Oban, return

## PRICES

**Royal** **NZ\$8,400 pp\***  
Located on the Bridge Deck, our Master Suite features a spacious bedroom with a queen-sized bed, ample storage with wardrobe and drawers, mirror and washbasin, private en suite, personal climate control, TV, PABX satellite telephone, window and French doors opening out on to the covered Bridge Deck.

**Salvin's** **NZ\$6,825 pp\***  
Located on the Lower Deck, Salvin's cabins have the option of either a double bed or two lower berths. Both feature ample storage with wardrobe and drawers, TV, PABX satellite telephone, private en suite and a picture porthole.

**Wandering** **NZ\$7,175 pp\***  
Located on the Lower Deck, Wandering cabins feature one lower single berth, ample storage with wardrobe and drawers, TV, PABX satellite telephone, private en suite and a porthole.

**Buller's** **NZ\$6,125 pp\***  
Located on the Lower Deck, the Buller's cabin features one bunk (one upper and one lower berth), ample storage with wardrobe and drawers, TV, PABX satellite telephone, private en suite and a porthole.

\* All prices are per person in NZ\$

## ADDITIONAL OPTION

**Premium drinks package**  
**NZ\$200 pp\***

## PRICE INCLUDES

Landing fees, pre and post cruise ferry and transfer, all on board ship accommodation with meals and all shore excursions and activities. GST, house drinks, expert on board naturalist guides.

## PRICE EXCLUDES

All items of a personal nature, laundry, domestic flights, extensions and travel insurance.

HX221018Z22CC



# Heritage Expeditions

New Zealand

**CRUISE**  
**World**

Contact Cruise World on 09 917 4440 | 0800 500 732  
info@cruiseworld.co.nz | www.cruiseworld.co.nz

# PRE CRUISE LAND PACKAGE



## Pre Land Arrangements

### Start/End:

Dunedin to Invercargill

### Dates:

Sunday 16 to Tuesday 18 October 2022  
Monday 31 October to Wednesday 02 November 2022

### Duration:

2 Nights/ 3 Days

## In-conjunction with cruise

Cruise Line/Ship: Heritage Expeditions—Heritage Explorer  
Cruise Name: Unseen Stewart Island: Pristine Wilderness and Wildlife Adventure  
Cruise Dates: 18 to 25 October 2022 & 02 to 09 November 2022  
Start/End Location: Invercargill return

## Pre Cruise Package Highlights/Inclusions:

- 3 days car rental, Toyota RAV 4 (or similar), Dunedin to Invercargill
- 2-nights accommodation at Mohua Park, Catlins Coast

## Pricing

(Currency NZD)

NZ\$655.00 per person based on share twin  
Single supplement price on request

*\* Pricing based on 16 October 2022 departure*

## Pre Cruise Package - Day by day Itinerary

### Day 1: Dunedin - Catlins

(D)

Collect your rental vehicle on arrival at Dunedin Airport.

Drive South on SH1 to the Catlins.

The Catlins Coast encompasses from Waipapa Point to Nugget Point, it is one of the wildest places in the country. It is also the best place to watch seals, sea lions or yellow-eyed penguins in the wild. Occasionally you will see whales and dolphins.

Mohua Park, 1 bedroom cottage:

Included: Car hire, accommodation, breakfast selection, BBQ dinner pack

### Day 2: Catlins Coast

(B,D)

Day at leisure to enjoy the sights of the Catlins.

Visit Nugget Point, Surat Bay, Mclean Falls, Jacks Blowhole Track, Florence Hill Lookout, Cathedral Cave, Slope Point and Curio Bay.

Mohua Park, 1 bedroom cottage:

Included: Car hire, accommodation, breakfast selection, BBQ dinner pack

### Day 3: Catlins - Invercargill

(B)

Check out of your accommodation and make your way to Invercargill airport to drop off your car and meet the group for departure on your Heritage Expedition cruise.

**Terms & Conditions:** Sales on request, subject to availability. Pre/post cruise package fares are NZD, per person share twin, based on special/promotional fares which are subject to change without notice, two people travelling together and sharing accommodation. Bookings will be made on a "REQUEST" basis and subject to availability at time of booking. This quote should not be considered as a confirmation. Payment, cancellation and other conditions apply. Please note that all guests must be fully vaccinated against Coronavirus and provide a valid vaccine pass for the duration of the tour, confirmed in writing at time of booking. New Zealand Traveller terms & conditions are to be read in conjunction with Heritage Expeditions terms & conditions and their required signed passenger information form to be completed. Contact your travel agent for details.

Cruise World, New Zealand Traveller  
Ph +64 9 917 4440 – Toll free 0800 500732 (outside Auckland)

**CRUISE** NEW ZEALAND  
World Traveller  
Unique, Boutique New Zealand